

MTC Standalone Installation V1



© 2017

A+B Solutions GmbH
Lorcherstr. 141/5
73529 Schwäbisch Gmünd
GERMANY

1 Table of contents

1	Table of contents	2
2	Preparation	3
3	Installation	3
4	Configuration	3
4.1	MTC-Server: mi_server.ini	3
4.2	SFC-Server: SOAPWrapper.properties	3
4.3	SFC-Administration	4
5	Language	4

2 Preparation

The ShopFloorConnect directory must be created manually

It must be included:

- Log directory
- Java directory with content of the SFC Installation

Environment variable TCFITDIR must be created manually. E.g C:\ShopFloorConnect

3 Installation

Start installation of the MTC-Service

4 Configuration

4.1 MTC-Server: mi_server.ini

Directory: %TCFITDIR%\FIT-MI_Server\webapps\wut\WEB-INF\conf

To change in the file:

- Local_ip=IP-Address or Hostname of the MTC-Server.
- Fsw_ip= IP-Address or Hostname of the SFC-Server

Please make sure that the Server is reachable from the SFC-Server.

4.2 SFC-Server: SOAPWrapper.properties

Directory: %TCFITDIR%\webapps\SOAPWrapper\WEB-INF\conf

To change in the file:

- Filter.RemoteAddrFilter.allow has to be empty

4.3 SFC-Administration

Teamcenter Server: tc13mr01, http://localhost/tc
Benutzer: DNC - Manufacturing / DNC

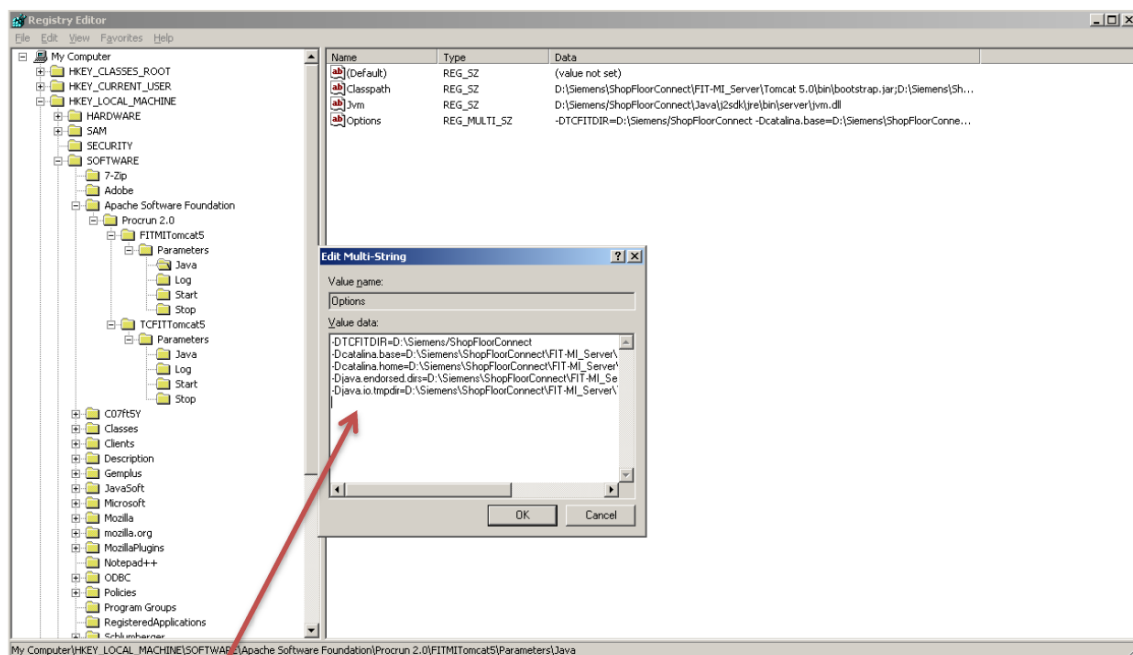


Input the local_ip from the mi_server.ini of the MTC-Server in this field.

Note: If local_ip is IP-Adress then input IP-Adress if hostname then input hostname

5 Language

If there is another language then en or de you have to change it in the registry.



-Duser.language=en